

Sukkah Model



The fall harvest festival of Sukkot lasts for eight days. To celebrate, people who observe the holiday build temporary shelters. Allan Wexler, the artist of this sukkah model, creates the furniture inside the sukkah with the same shapes that he cut from its walls – a reminder that many of the things we use come from nature.

Materials you will need:

Brown paper lunch bag

Scissors

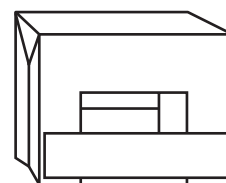
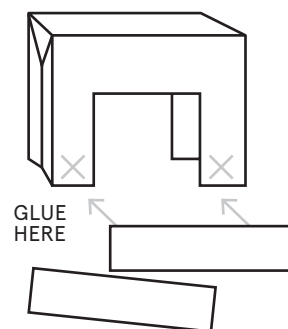
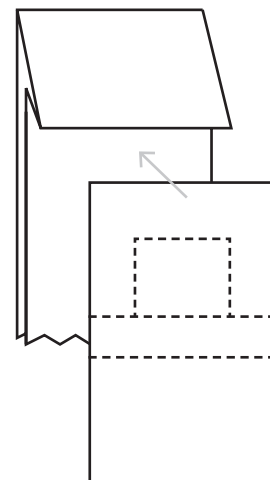
Glue stick

Optional: markers, natural materials like grass, twigs, or leaves



Create Your Own Sukkah Model

- 1 Print out these pages to get started. Cut out the template on page 3.
- 2 Flatten your lunch bag and lay the template over your bag. This will show you how to cut your bag.
- 3 Cut your bag on the line that says STEP 3.
- 4 Cut on the line that says STEP 4. Save this strip to use in STEP 7.
- 5 Flip up the base of the bag so that you do not cut into it. Then cut on the line that says STEP 5.
- 6 Open up your bag and turn it upside down so the base is at the top and it stands like a table on four "legs." This is the beginning of your sukkah model!
- 7 Use the strip you cut in STEP 4. Open up this strip and slide it over the "legs" of your sukkah model. Then glue the inside of the strip to the legs of your model.
- 8 Take some time to decorate your model with markers. Think about including drawings of vegetables and fruit or other elements from nature.
- 9 You might want to glue grass, twigs, or leaves to the top of your sukkah model. When you are finished, find a place for your model in your family's sukkah or in your home!



Bag Template

