

The Arcades: Contemporary Art and Walter Benjamin

The Jewish Museum

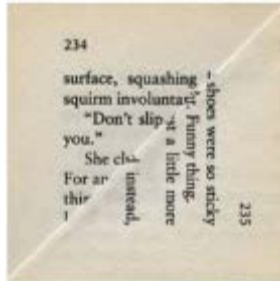
March 17, 2017 – August 6, 2017

Checklist

	<p>Erica Baum <i>Never</i> 2015 Archival pigment print, 9 x 9 inches Courtesy of the artist and Bureau, New York</p>
	<p>Erica Baum <i>Enclosing</i> 2010 Archival pigment print, 9 x 9 inches Courtesy of the artist and Bureau, New York</p>
	<p>Erica Baum <i>Mad</i> 2009 Archival pigment print, 9 x 9 inches Courtesy of the artist and Bureau, New York</p>
	<p>Erica Baum <i>Page Pencil</i> 2013 Archival pigment print, 9 x 9 inches Courtesy of the artist and Bureau, New York</p>
	<p>Erica Baum <i>Wishes</i> 2014 Archival pigment print, 9 x 9 inches Courtesy of the artist and Bureau, New York</p>



Erica Baum
Elegant Solution
2009
Archival pigment print, 9 x 9 inches
Courtesy of the artist and Bureau, New York



Erica Baum
Shoes
2009
Archival pigment print, 9 x 9 inches
Courtesy of the artist and Bureau, New York



Erica Baum
Played
2016
Archival pigment print, 9 x 9 inches
Courtesy of the artist and Bureau, New York



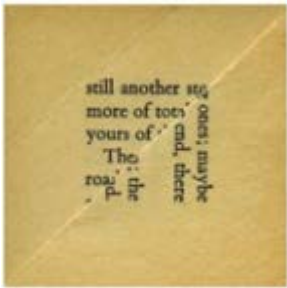
Erica Baum
Void
2013
Archival pigment print, 9 x 9 inches
Courtesy of the artist and Bureau, New York



Erica Baum
Venice
2014
Archival pigment print, 9 x 9 inches
Courtesy of the artist and Bureau, New York



Erica Baum
Corpse
2014
Archival pigment print, 9 x 9 inches
Courtesy of the artist and Bureau, New York



Erica Baum
End There
2009
Archival pigment print, 9 x 9 inches
Courtesy of the artist and Bureau, New York



Walead Beshty
American Passages
2001-2011
Slide projection
Courtesy of the artist and Regen Projects, Los Angeles



Milena Bonilla
Stone Deaf
2009-2010
Graphite rubbing on paper, HD video 5-minute loop; Rubbing: 76 x 42 x 2 inches
Courtesy of the artist and Kadist, San Francisco



Andrea Bowers
The Triumph of Labor
2016
Marker on cardboard, 108.8 x 248 x 6.5 inches
Rennie Collection, Vancouver, British Columbia, courtesy of Susanne Vielmetter, Los Angeles Projects



Chris Burden
Tower of London Bridge
2003
Stainless-steel Mysto Type I Erector parts, gearbox, wood base;
Bridge: 28.5 x 80.3 x 8.5 inches
Courtesy of the Chris Burden Estate and Gagolian



Nicholas Buffon
Katz's Delicatessen
2017
Foam, glue, paper, paint, 19 x 33 x 6.5 inches
Courtesy of the artist and Callicoon Fine Arts, New York



Nicholas Buffon
Odessa
2016
Foam, glue, paper, paint, 40.3 x 23.3 x 13 inches
Courtesy of the artist and Callicoon Fine Arts, New York



Nicholas Buffon
Lower East Side Coffee Shop
2016
Foam, glue, paper, paint, 31 x 17.3 x 7.3 inches
Collection of Matt and Susan Ross



Nicholas Buffon
The Stonewall Inn
2017
Foam, glue, paper, paint,
Courtesy of the artist and Callicoon Fine Arts, New York



Haris Epaminonda and Daniel Gustav Cramer
The Infinite Library
2007 – ongoing
Reassembled and bound found books
Courtesy of the artists



Simon Evans
The Voice
2010
Mixed media on paper, 44 x 44 inches
Collection of Alka and Ravin Agrawal



Walker Evans
Subway Passengers, New York
1938
Gelatin silver print, 5 x 7.4 inches
Private collection, San Francisco



Walker Evans
Subway Passengers, New York
1938
Gelatin silver print, 4.6 x 6.5 inches
Private collection, San Francisco



Claire Fontaine
The Barricades of May Brickbat
2007
Brick, brick fragments, digital print, 7.9 x 5.11 x 2.3 inches
Courtesy of the artist



Lee Friedlander
New York City
2011
Gelatin silver print; 20 x 16 inches
Fraenkel Gallery, San Francisco



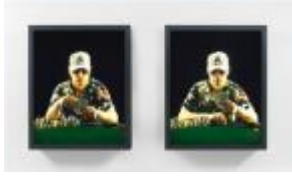
Lee Friedlander
New York City
2010
Gelatin silver print; 20 x 16 inches
Fraenkel Gallery, San Francisco



Lee Friedlander
New York City
2009
Gelatin silver print; 20 x 16 inches
Fraenkel Gallery, San Francisco



Lee Friedlander
New York City
2011
Gelatin silver print; 20 x 16 inches
Fraenkel Gallery, San Francisco



Rodney Graham
Good Hand Bad Hand
2010

Two painted aluminum lightboxes with transmounted chromogenic transparencies, 35.3 x 29.3 x 7 inches each
Courtesy of the artist and Kadist, San Francisco



Andreas Gursky
Singapore Stock Exchange
1997

Chromogenic print, face-mounted to acrylic, 66.9 x 106.3 inches
Solomon R. Guggenheim Museum, New York, Purchased with funds contributed by the Photography Committee, 1998



Raymond Hains
Martini
1968

Plexiglas relief, 72.1 x 105.9 inches
Estate of Raymond Hains, courtesy of Galerie Max Hetzler, Paris and Berlin



Pierre Huyghe
Sleeptalking
1998

Video projection of Super 16mm film transferred to video, sound.
Running time: 64 min, 10 sec.
Courtesy of the artist and Marian Goodman Gallery, New York



Voluspa Jarpa
What You See Is What It Is
2013
Steel modules, laser-cut acrylic plates, 116.5 x 24 x 43.4 inches
Courtesy of Mor Charpentier, Paris, Enrique Jocelyn Holt Collection,
and the artist



Jesper Just
Intercourses
2013
Modified 5-channel video installation
Courtesy of the artist and Galerie Perrotin, New York



Sanya Kantarovsky
Two Suns
2017
Oil, oilstick, pastel, watercolor on linen, 74.8 x 98.4 inches
Courtesy of the artist



Mike Kelley
Mobile Homestead Swag Lamp
2013
Aluminum, steel, lighting fixtures, wiring, 16.5 x 25.6 x 17.6 inches
Mike Kelley Foundation for the Arts and Museum of Contemporary
Art, Detroit



Tim Lee
Untitled (Alexander Rodchenko, 1928)
2008
Four framed black-and-white photographs, 30 x 30 inches each
Courtesy of the artist and Kadist, San Francisco



Tim Lee
Untitled II (Alexander Rodchenko, 1928)
2008
Painted stainless steel, mirror, Leica 1 camera, 50 x 50 x 50 inches
Courtesy of the artist and Lisson Gallery, London



Jorge Macchi
The City of Light
2007
Lamp, table, map, digital print on paper, Dimensions variable
Collection Inhotim, Brumadinho, Brazil



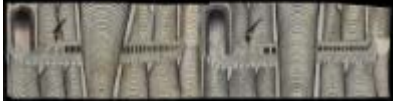
Adam Pendleton
Black Dada Reader (wall work #1)
2016
Adhesive vinyl, Dimensions variable
Courtesy of the artist



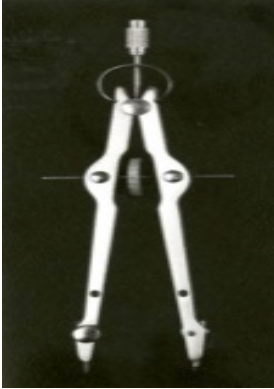
Adam Pendleton
what is...?/Chagall (study)
2017
Silkscreen ink on Mylar, 40.4 x 31.4 inches
Courtesy of the artist



Adam Pendleton
Dada Dancers (Study)
2016
Silkscreen ink on Mylar, 40.4 x 31.4 inches
Courtesy of the artist



Martín Ramírez
Untitled (Trains and Tunnels) A, B
1960-1963
Gouache, graphite on pieced paper, 19 x 76.5 inches
Collection of John and Barbara Wilkerson



Bill Rauhauser
Drawing Compass
1960-1970
Pigment paper, 30 x 23.5 inches
Bill Rauhauser, Courtesy of Hill Gallery, Birmingham, Michigan



Mary Reid Kelley
Charles Baudelaire
2013
Pigment ink print, 22.4 x 16.1 inches
Courtesy of the artist and Kadist, San Francisco



Ry Rocklen
Blue Eyed Worshipper, Southern Mesopotamia, 2600-2500 BC
2015
Ceramic vessels, mirror-mounted panel, brass, glass, 52.5 x 32.8 x 9.5 inches
Bjørnholt Collection, Oslo



Markus Schinwald
Untitled (Machine I)
2016
Brass, wood, motor, 98.4 x 55.1 x 23.6 inches
Courtesy of Galerie Thaddaeus Ropac, London, Paris, and Salzburg



Collier Schorr
Jennifer (Head)
2002-2014
Pigment print, 56 x 40.6 inches
Private collection



Cindy Sherman
Untitled #474
2008
Chromogenic print, 90.8 x 60 inches
Collection of Cynthia and Abe Steinberger



Taryn Simon
Folder: Abandoned Buildings and Towns
2012
Archival inkjet print, 47 x 62 inches
Courtesy of the artist and Gagosian



Taryn Simon
Folder: Swimming Pools
2012
Archival inkjet print, 47 x 62 inches
Courtesy of the artist and Gagosian



Taryn Simon
Folder: Costume-Veil
2012
Archival inkjet print, 47 x 62 inches
Courtesy of the artist and Gagosian



Taryn Simon
Folder: Paper-Endpapers
2012
Archival inkjet print, 47 x 62 inches
Courtesy of the artist and Gagosian



Joel Sternfeld
Dacha/Staff Building, Gesundheit! Institute, Hillsboro, West Virginia, April 2004
2005
Chromogenic print, accompanying text; Image: 10.4 x 13.1 inches
Courtesy of the artist and Luhring Augustine, New York



Joel Sternfeld
Oneida Community Mansion House, Oneida, New York, August 1996
2005
Chromogenic print, accompanying text; Image: 10.4 x 13.1 inches
Courtesy of the artist and Luhring Augustine, New York



Joel Sternfeld
Roofless Church, New Harmony, Indiana, May 2000
2005
Chromogenic print, accompanying text; Image: 10.4 x 13.1 inches
Courtesy of the artist and Luhring Augustine, New York



Joel Sternfeld
Paolo Soleri at Arcosanti, Cordes Junction, Arizona, August 2000
2005
Chromogenic print, accompanying text; Image: 10.4 x 13.1 inches
Courtesy of the artist and Luhring Augustine, New York



Mungo Thompson
June 25, 2001 (How the Universe Will End) March 6, 1995 (When Did the Universe Begin?)
2012
Installation: enamel on low-iron mirror, poplar, anodized aluminum;
Two panels, 74 x 56 x 2.5 inches each
Courtesy of the artist and Kadist, San Francisco



Timm Ulrichs
Walter Benjamin: "The Work of Art in the Age of Mechanical Reproduction"—Interpretation: Timm Ulrichs, The Photocopy of the Photocopy of the Photocopy of the Photocopy"
1967
Sequence of 100 black-and-white photocopies, wooden frames, 11.7 x 8.26 inches each; 100 pages
Courtesy of the artist and Wentrup, Berlin



James Welling
Morgan Great Hall
Inkjet print; 21 x 31.5 inches
2014
Wadsworth Atheneum Museum of Art, Hartford, Purchased through a gift from Nancy D. Grover in honor of Robinson A. Grover (1936–2015)



Guido van der Werve
Nummer dertien, effugio C: you're always only half a day away
2011
12-hour HD video, framed text
Courtesy of the artist and Luhring Augustine, New York



Cerith Wyn Evans

Astro-photography by Siegfried Marx (1987)

1987

Chandelier (Barovier and Toso), Morse code unit,; Dimensions variable. Chandelier: 34.3 x 33.4 inches;

Collection of Susan and Steven Jacobson, NY