

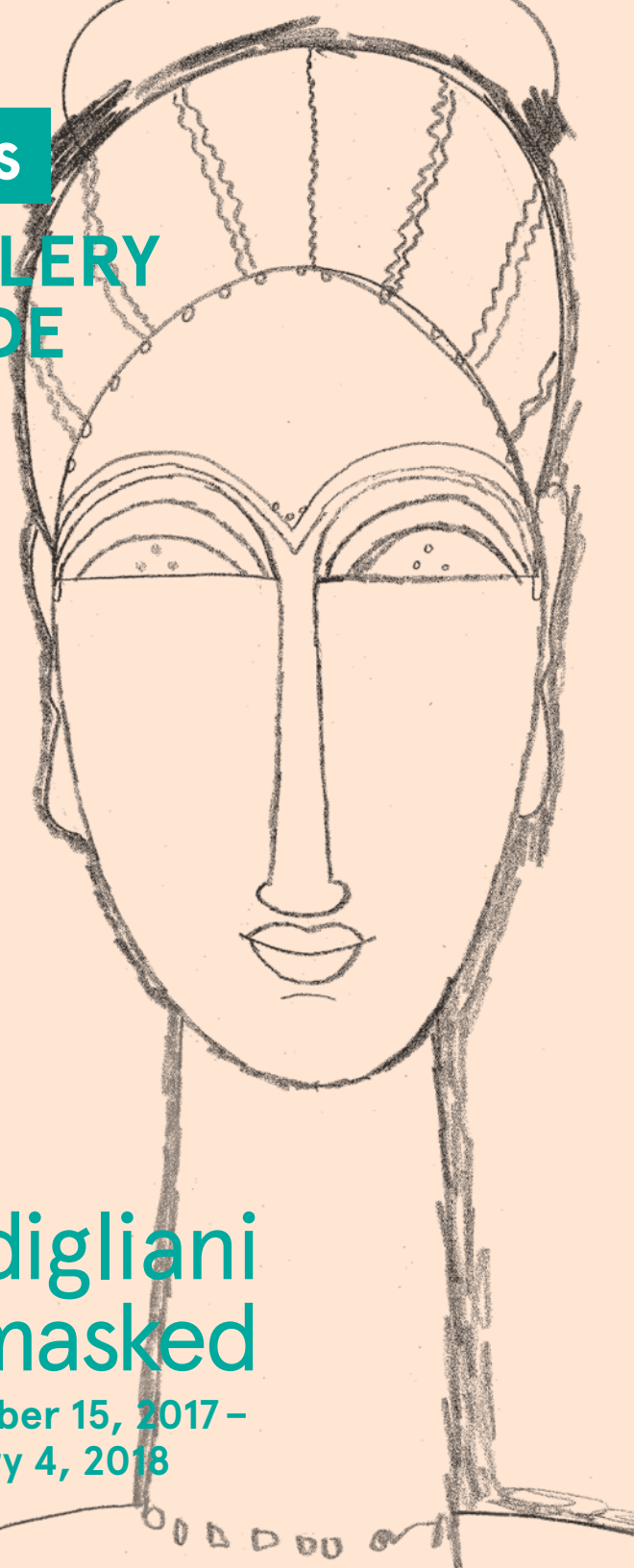
Tomishch Museum

Kids

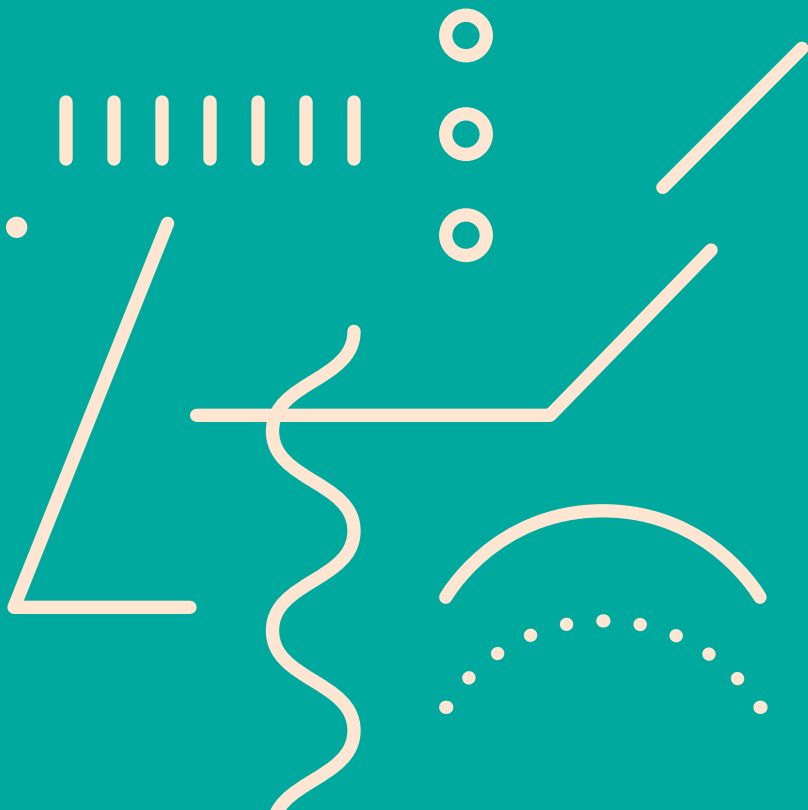
GALLERY
GUIDE

Modigliani Unmasked

September 15, 2017 –
February 4, 2018



Amedeo Modigliani was an Italian Jewish artist who lived from 1884 - 1920. Modigliani thought of himself as a sculptor first, and while he is best known for his paintings and sculptures, drawing was an important focus of Modigliani's artistic process. As you explore the works of art in the exhibition, notice the connections between Modigliani's drawings and his paintings or sculptures.





Begin on the second floor and make a left after you exit the elevator.

Enter the gallery to your right where you will see a number of drawings and sculptures.

Choose one drawing that interests you. Spend some time looking at the drawing and discuss the following as a family:

- **Describe what you see.**
- **What kinds of lines do you notice? Are they curved, straight, wiggly, thin, thick, textured, light or dark?**
- **Trace the lines in the air with your finger. (Remember not to get too close to the art!)**
- **A few simple lines can reveal a lot about an image. What characteristics of the subject did Modigliani choose to emphasize?**
- **What qualities do you think make Modigliani's images of people unique? Think about the shape of the head, facial features, or the person's body.**

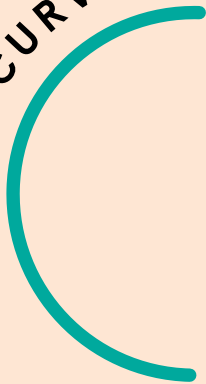


DARK

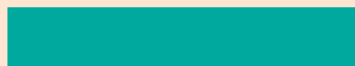


LIGHT

CURVED



WIGGLY



THICK



THIN



TEXTURED

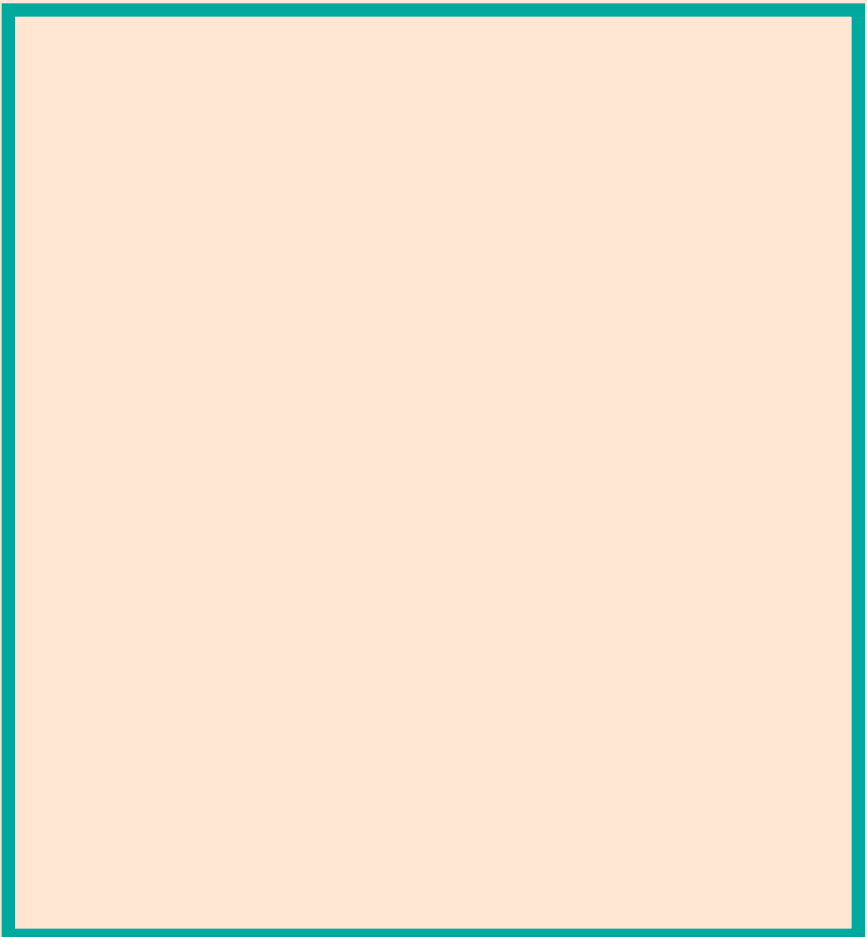


STRAIGHT

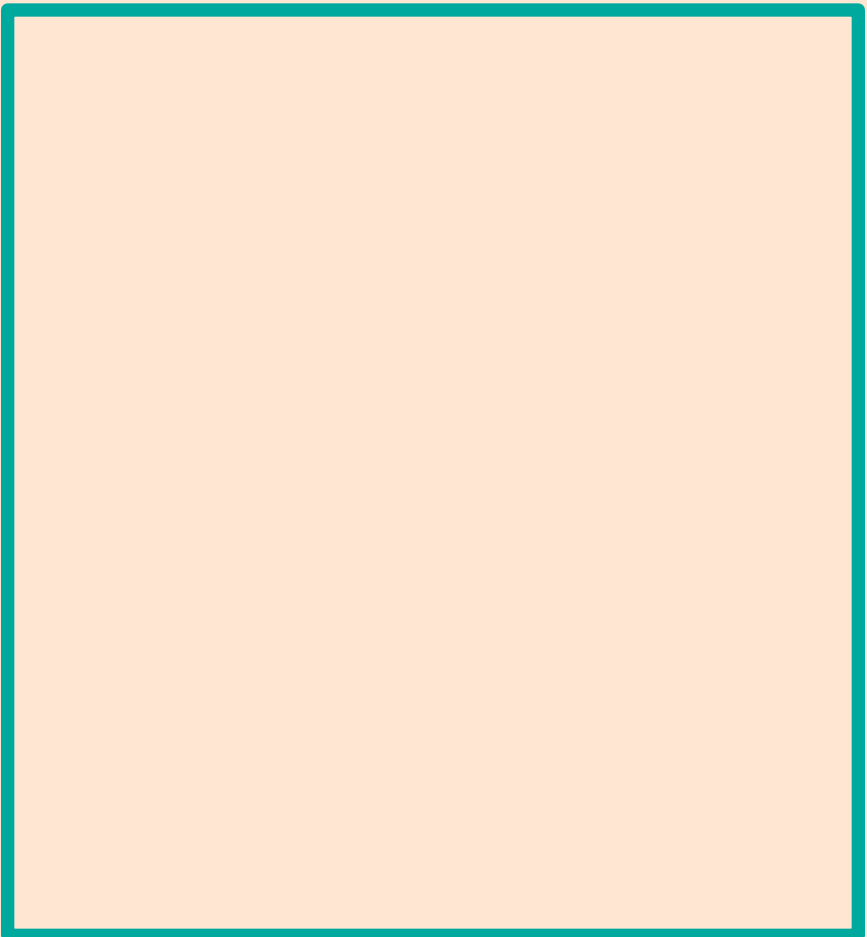
DRAWING ACTIVITY

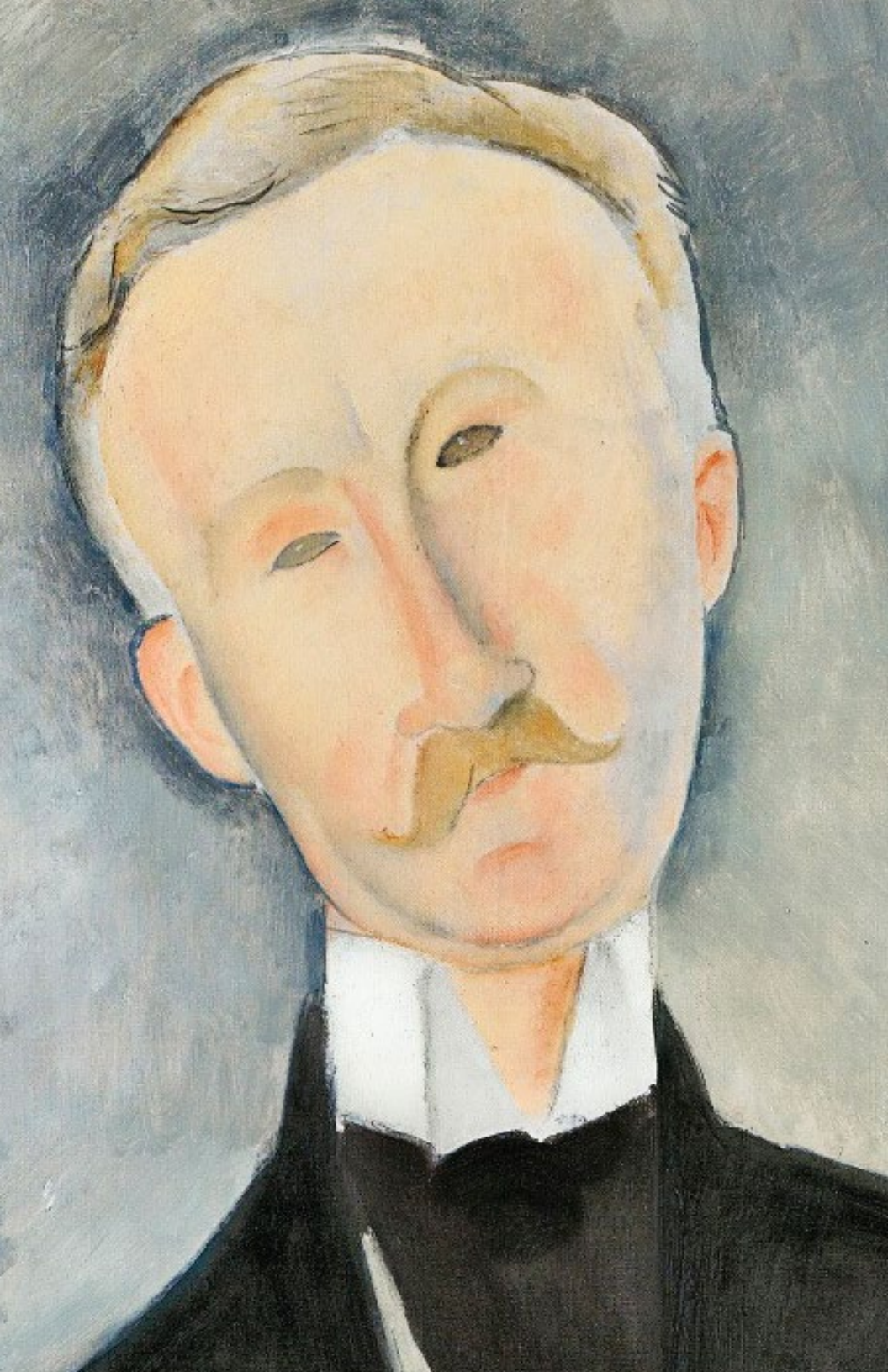
Look again at the drawing you were just examining.

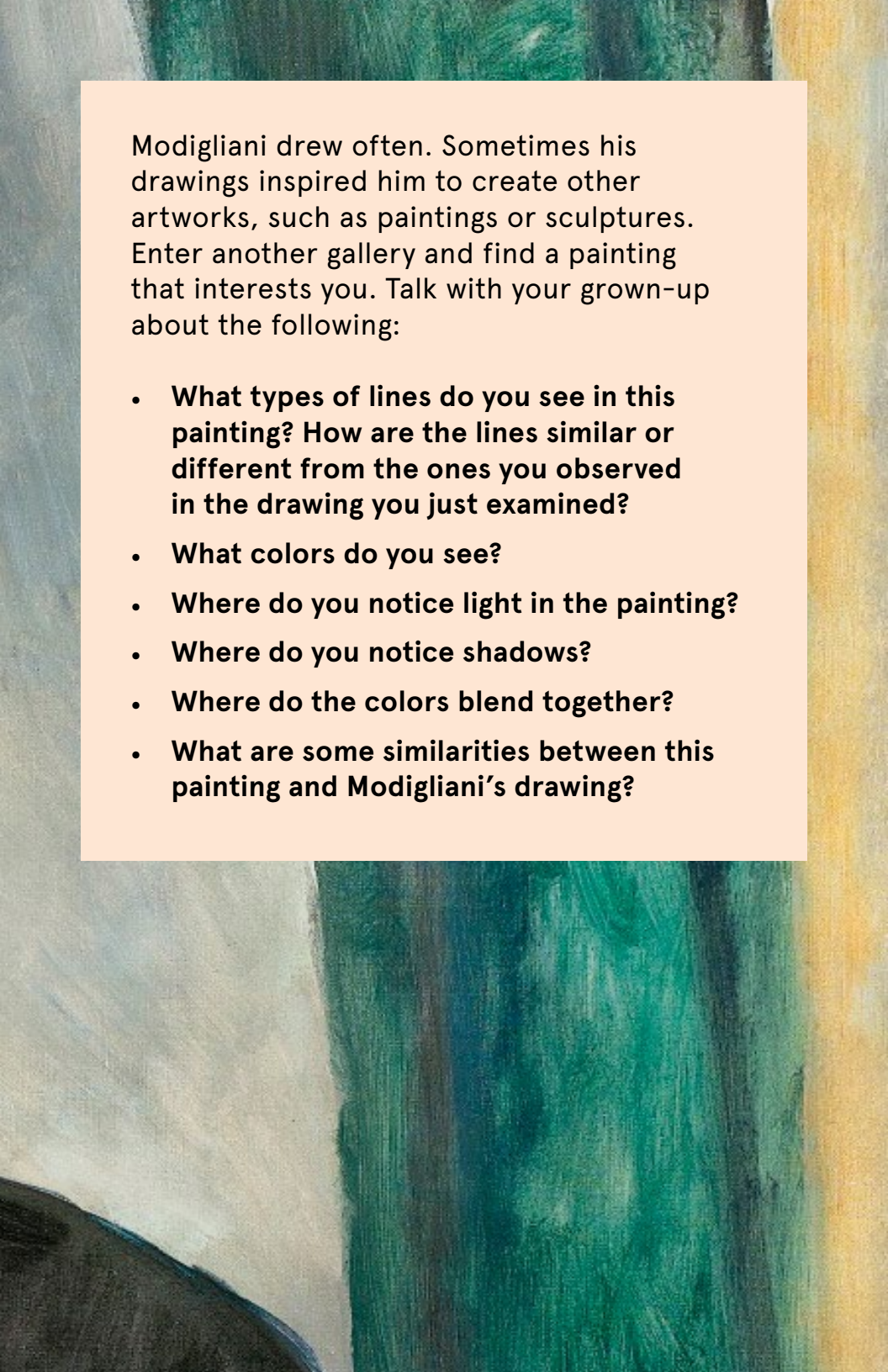
- **In the first box below, draw what you see using only eight lines. They do not need to be exactly the same as Modigliani's, just try to create lines similar to the ones you notice in the drawing.**



- **In the second box draw the same image in a simpler way, using only four of the lines that you used in the first drawing.**
- **Discuss your drawing with your grown-up. Which lines did you keep for your final drawing? Why did you choose to keep those lines?**





An abstract painting with vertical stripes of green and yellow. The green stripes are in the center and left, while a yellow stripe is on the right. The brushstrokes are visible and textured.

Modigliani drew often. Sometimes his drawings inspired him to create other artworks, such as paintings or sculptures. Enter another gallery and find a painting that interests you. Talk with your grown-up about the following:

- **What types of lines do you see in this painting? How are the lines similar or different from the ones you observed in the drawing you just examined?**
- **What colors do you see?**
- **Where do you notice light in the painting?**
- **Where do you notice shadows?**
- **Where do the colors blend together?**
- **What are some similarities between this painting and Modigliani's drawing?**



AT HOME

Draw a portrait of one of your family members using simple lines.

- Start by thinking about which features you would like to focus on. Is it their eyes, nose, mouth, hair, or clothes?
- What types of lines will you use to create each feature?
- Use pencil and paper to create your drawing.
- Think about adding colored pencil to areas of the portrait. How might your color choices express what makes this person unique?



Thank you for visiting the Jewish Museum— we hope you enjoyed the exhibition!

For information on Family Programs at the Jewish Museum, visit [TheJewishMuseum.org/Families](https://www.thejewishmuseum.org/families) or sign up for our eNews at [TheJewishMuseum.org/eNews](https://www.thejewishmuseum.org/eNews).

Modigliani Unmasked is made possible by The Jerome L. Greene Foundation.



Additional support is generously provided by Barbara and Ira A. Lipman, the Edmond de Rothschild Foundations, Capital One, and other generous donors.

Family Programs are supported, in part, by public funds from the New York City Department of Cultural Affairs in partnership with the City Council and the New York State Council on the Arts with the support of Governor Andrew M. Cuomo and the New York State Legislature.

NYC Cultural
Affairs



Cover: Amedeo Modigliani, *Female Head*, 1911–12, black crayon on paper. Paul Alexandre Family, courtesy of Richard Nathanson, London. Image provided by Richard Nathanson, photographed by Prudence Cuming Associates, London | **Page 3:** Amedeo Modigliani, *Woman in Profile*, 1911–12, charcoal and pastel on paper. Museum of Modern Art, New York. The Joan and Lester Avnet Collection. Image provided by The Museum of Modern Art / Licensed by SCALA / Art Resource, New York | **Pages 8 – 9:** Amedeo Modigliani, *Portrait of Roger Dutilleul*, 1919, oil on canvas. Collection of Bruce and Robbi Toll | **Page 10:** Amedeo Modigliani, *Study for "The Amazon,"* 1909, black crayon on paper. Private collection, courtesy of Richard Nathanson, London. Image provided by Richard Nathanson, photographed by Prudence Cuming Associates, London



5th Ave at 92nd St, NYC
[TheJewishMuseum.org](https://www.thejewishmuseum.org)
Under the auspices of the
Jewish Theological Seminary

